

Enantioselective Synthesis of Homoallylic Amines through Reactions of (Pinacolato)allylborons with Aryl-, Heteroaryl-, Alkyl-, or Alkene-Substituted Aldimines Catalyzed by Chiral C_1 -Symmetric NHC–Cu Complexes

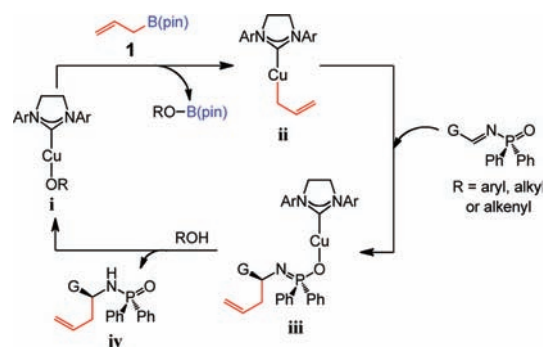
Erika M. Vieira, Marc L. Snapper,* and Amir H. Hoveyda*

Department of Chemistry, Merkert Chemistry Center, Boston College, Chestnut Hill, Massachusetts 02467, United States

Supporting Information

ABSTRACT: A catalytic method for enantioselective synthesis of homoallylamides through Cu-catalyzed reactions of stable and easily accessible (pinacolato)allylborons with aryl-, heteroaryl-, alkyl-, or alkenyl-substituted *N*-phosphinoylimines is disclosed. Transformations are promoted by 1–5 mol % of readily accessible NHC–Cu complexes, derived from C_1 -symmetric imidazolium salts, which can be prepared in multigram quantities in four steps from commercially available materials. Allyl additions deliver the desired products in up to quantitative yield and 98.5:1.5 enantiomeric ratio and are amenable to gram-scale operations. A mechanistic model accounting for the observed selectivity levels and trends is proposed.

Scheme 1. Catalytic Cycle for Reaction of (Pinacolato)allylboron with Aldimines Promoted by an NHC–Cu Complex [B(pin) = pinacolatoboron]



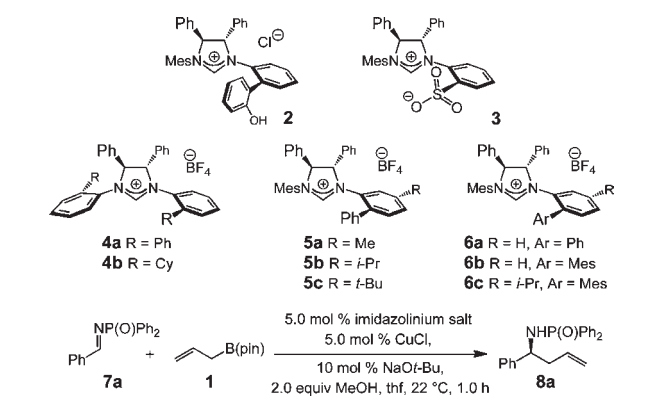
Homoallylic amines are imbedded within structures of many biologically active agents and can serve as entities for the preparation of myriad N-containing molecules.^{1,2} Development of efficient and enantioselective allyl additions to aldimines, a direct approach for accessing chiral homoallylic amines, is thus a compelling objective in chemical synthesis. Enantiomerically pure allyl-containing reagents, used in stoichiometric quantities, react efficiently and diastereoselectively with aldimines; the utility of these strategies has been demonstrated in complex molecule synthesis.³ Substrates containing a chiral auxiliary can participate in highly diastereoselective allyl additions.⁴ Such an approach, however, requires especially reactive allylmetals (e.g., Grignard reagents^{4a} or allylzincs^{4g}) that could be intolerant of a number of key functional groups and/or preparation of which might be complicated; alternatively, stoichiometric quantities of costly allylindiums^{4b–f} and/or Pd-based catalysts are needed.^{4b,e} Several reports have demonstrated that chiral catalysts promote additions of allyl groups to aldimines.^{5–8} Nonetheless, such protocols also demand precious indium salts (at times in stoichiometric amounts or more)⁶ or require allyl reagents that are highly toxic^{8a} or relatively unstable (so that high reactivity is achieved);^{7b} some reported catalytic enantioselective approaches are operative with imines derived from activated aldehydes (e.g., glyoxylates)^{5–7} or furnish products that necessitate somewhat harsh or costly conditions for conversion to the unprotected amine.^{5–8} A reasonably general, cost-effective, and functional group tolerant catalytic enantioselective process thus remains lacking. We outline a method for the synthesis

of enantiomerically enriched homoallylamides by reactions of stable allylboron reagents that can be either purchased or easily prepared. Transformations are performed with an inexpensive Cu salt and 1–5 mol % of chiral C_1 -symmetric imidazolium salts,⁹ multigram quantities of which can be synthesized from commercially available materials by a straightforward four- to five-vessel protocol (~30% overall yield). Complete conversion is observed in 6–18 h; the desired products are isolated in 61% to >98% yield and in up to 98.5:1.5 enantiomer ratio (er). Conversion of the resulting *N*-phosphinoylamides to the derived amines can be effected under aqueous acidic conditions, as demonstrated previously.¹⁰

The present investigations were conceived as a result of our interest in designing catalytic transformations promoted by *N*-heterocyclic carbene (NHC) copper complexes generated in situ by an initial reaction with a boron-based reagent.^{9b,c,11} We surmised that reaction of Cu-alkoxide **i** with (pinacolato)allylboron **1** should afford NHC–Cu-allyl **ii** (Scheme 1), a process driven by the formation of the energetically favorable B–O bond. We have previously adopted a similar strategy with B–B¹¹ and B–Si^{9b} reagents to generate NHC–Cu–B complexes or the corresponding silanes, which participate in enantioselective C–B or C–Si bond forming reactions. We sought to examine whether the above approach might be utilized such that the B–C bond reacts with an NHC–Cu-alkoxide to yield a catalytically active NHC–Cu–C system (vs NHC–Cu–B or NHC–Cu–Si).¹² The resulting

Received: January 12, 2011

Published: February 22, 2011

Table 1. Screening of Chiral NHC Complexes^a

entry	imid. salt	conv (%) ^b	er ^c
1	2	>98	57.5:42.5
2	3	70	47.5:52.5
3	4a	84	55.5:44.5
4	4b	>98	56:44
5	5a	>98	72.5:27.5
6	5b	>98	70:30
7	5c	>98	67.5:32.5
8	6a	>98	73.5:26.5
9	6b	>98	91:9
10	6c	>98	88:12

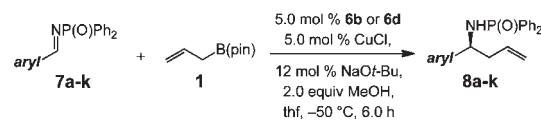
^a Reactions performed under N₂ atmosphere with 2.0 equiv of **1**. ^b Values determined by analysis of 400 MHz ¹H NMR spectra of unpurified mixtures. ^c Values determined by HPLC analysis; see the Supporting Information for details. Mes = 2,4,6-(Me)₃C₆H₂.

NHC–Cu–allyl **ii** could undergo reaction with an *N*-phosphinoylimine to initiate C–C bond formation, furnishing **iii**. Catalyst release might occur either by σ -bond metathesis between the Cu–O bond of **iii** and the C–B of another molecule of **1** to generate the boronic ester derivative of the desired product¹³ or through the agency of an alcohol additive.¹⁴

To probe the feasibility of the envisioned catalytic cycle, we investigated the ability of various chiral NHC–Cu complexes to catalyze the reaction of **7a** and **1** (Table 1). Catalysts were formed and utilized in situ by treatment of the corresponding imidazolium salts with NaOt-Bu and CuCl; MeOH filled the role of a proton source. Bidentate Cu complexes derived from phenol **2** or sulfonate **3** (entries 1, 2) readily promote transformation but deliver **8a** with minimal stereoselectivity. Similarly high efficiency and inferior enantioselectivity are obtained with C₂-symmetric **4a,b** (entries 3, 4). Enantiomeric purity is improved when C₁-symmetric NHC–Cu complexes derived from **5a–5c** or **6a** serve as catalysts (entries 5–8).

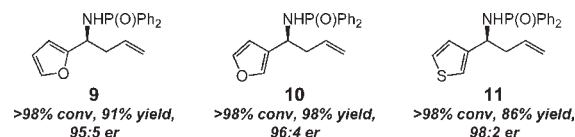
However, it is through the use of **6b** (entry 9, Table 1), bearing an *o*-substituted mesitylphenyl as its dissymmetric *N*-aryl group, that, without any diminution in efficiency (>98% conv), a significantly improved er is achieved (91:9 er). Incorporation of a *m*-isopropyl unit, beneficial in certain previous studies (**6c**, entry 10),^{9b} does not enhance selectivity. Performing the reaction with 1.4 equivalents of **1** at –50 °C, under otherwise identical conditions, delivers **8a** in 95% yield and 97:3 er (entry 1, Table 2).

A variety of aryl-substituted substrates can be used; the resulting homoallylamides are isolated in 88% to >98% yield

Table 2. NHC–Cu-Catalyzed Enantioselective Allyl Addition to Aryl-Substituted Phosphinoylimines^a

entry	substrate (aryl)	imid. salt	conv (%) ^b	yield (%) ^c	er ^d	
1	Ph	7a	6b	>98	95	97:3
2	2-naphthyl	7b	6d	>98	89	97:3
3	<i>o</i> -FC ₆ H ₄	7c	6b	>98	95	98:2
4	<i>o</i> -BrC ₆ H ₄	7d	6b	>98	92	98:2
5	<i>o</i> -MeC ₆ H ₄	7e	6d	>98	98	96:4
6	<i>o</i> -MeOC ₆ H ₄	7f	6d	>98	98	97:3
7	<i>m</i> -BrC ₆ H ₄	7g	6b	>98	88	96:4
8	<i>p</i> -ClC ₆ H ₄	7h	6b	>98	92	98:2
9	<i>p</i> -BrC ₆ H ₄	7i	6b	>98	92	98.5:1.5
10	<i>p</i> -CF ₃ CeH ₄	7j	6b	97	95	98.5:1.5
11	<i>p</i> -OMeC ₆ H ₄ ^e	7k	6d	>98	>98	98:2

^a Reactions performed under N₂ atmosphere with 1.4 equiv of (pinacolato)allylboron **1**. ^b Values determined by analysis of 400 MHz ¹H NMR spectra of unpurified mixtures (9-methylanthracene as internal standard). ^c Yields of isolated products after purification (\pm 5%). ^d Values determined by HPLC analysis; see the Supporting Information for details. ^e Carried out at –15 °C.

Scheme 2. NHC–Cu-Catalyzed Enantioselective Allyl Addition to Heteroaryl-Substituted Phosphinoylimines^a

^a Performed under the conditions shown in Table 2 with **6b** (for **9** and **11**) or **6d** (for **10**) as the imidazolium salt. Conversions and selectivities determined as indicated in Table 2; yields of isolated and purified products (\pm 5%).

and 96:4–98.5:1.5 er (Table 2). Electron-deficient aldimines (entries 3, 4, 7–10) as well as those containing an electron-donating substituent (entries 6 and 11), undergo facile transformation to afford products in \geq 97:3 er. In the case of sterically congested aldimines **7b,e,f** (entries 2, 5, 6), and **7k**, the latter of which contains a *p*-methoxyphenyl unit (entry 11), higher enantioselectivity is achieved with the NHC–Cu complex derived from **6d** [**7b,e,f,k** in 84:16–87.5:12.5 er (>98% conv) with **6b**]. The catalytic protocol can be performed with aldimines bearing a heteroaromatic unit (**9–11**, Scheme 2).

Similar to **6b**, **6d** is C₁-symmetric but bears two dissymmetric *N*-Ar units, existing as a 5:1 mixture of stereoisomers in solution (determined by analysis of 400 MHz ¹H NMR); imidazolium salt **6d** is used as a mixture of isomers. The X-ray structure of the major isomer of **6d** is shown in Figure 1; the same conformer is predominant in solution, as established by nOe experiments.¹⁵ Whether both of the derived NHC–Cu complexes promote reaction and the facility with which the two stereoisomers undergo interconversion (after complexation) is unclear.¹⁶

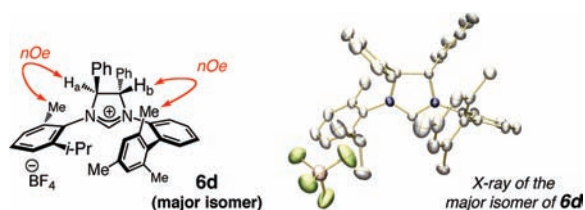
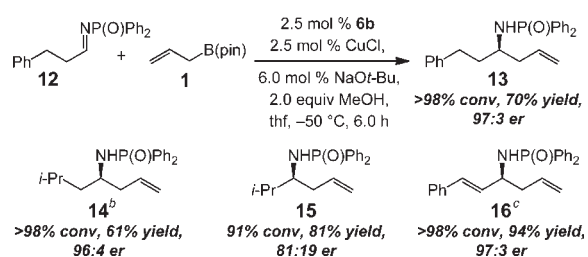


Figure 1. Nuclear Overhauser effect (nOe) experiments and X-ray structure, indicating the identity of the major isomer of imidazolium salt **6d** (5:1; see the Supporting Information for details).

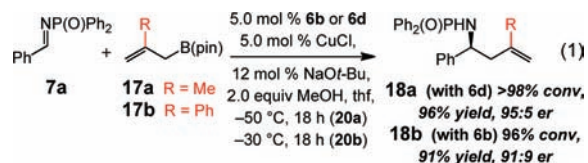
Scheme 3. NHC–Cu-Catalyzed Enantioselective Allyl Addition to Alkyl-Substituted Phosphinoylimines^{a,b,c}



^a Performed under identical conditions for **R**-13. Conversions and selectivities determined as indicated in Table 2; yields are of the purified products ($\pm 5\%$). ^b With catalyst derived from **6d**. ^c Performed with 5.0 mol % of **6d** and CuCl and 12 mol % NaOt-Bu.

A difficult class of substrates consists of alkyl-substituted imines,^{5–8,17} which can be converted to the derived homoallylic amines in high enantiomeric purity (**13–16**, Scheme 3). Contrary to aldimines that bear a linear (e.g., **13** in 97:3 er) or β -branched (e.g., **14** in 96:4 er) group, enantioselectivity is diminished with an α -substituted alkyl unit (cf. **15** in 81:19 er). The highly enantioselective generation of diene **16** with the Cu complex derived from **6d** demonstrates that enal-derived aldimines are suitable substrates as well (85:15 er and >98% conv with **6b**).

Another class of allyl-containing agents that has received less attention is 2-substituted allylboronates such as methyl- and phenyl-containing **17a,b** (eq 1).^{5,8a,18} Cu-catalyzed reactions are promoted, albeit with a higher catalyst loading and longer reaction times (5.0 mol % **6d** or **6b**), to deliver **18a,b** in 96% and 91% yield and 95:5 and 91:9 er, respectively. Transformations with *E*- or *Z*-crotylborons proceed efficiently and with appreciable enantioselectivity (85:15–90:10 er), but diastereoselectivities are low ($\sim 60:40$ dr).



As shown in eq 2, the enantioselective Cu-catalyzed transformation can be performed on a reasonable laboratory scale (1.0 g) with only 1.0 mol % of the chiral catalyst. In the case of homoallylamide **8a**, material of high enantiomeric purity (97.5:2.5 er) is isolated in 75% yield by simple filtration without resorting to silica gel chromatography.

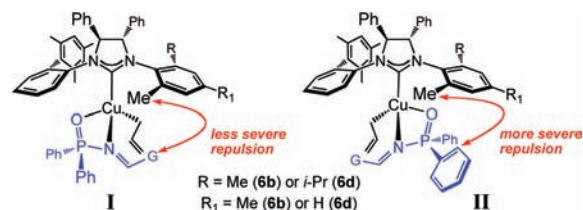
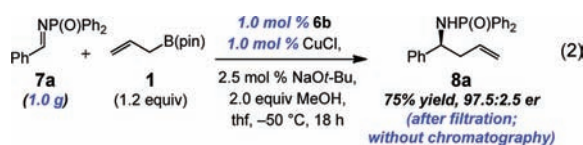


Figure 2. Model for origin of enantioselectivity in NHC–Cu-catalyzed allyl additions to *N*-phosphinoylimines.



Several mechanistic issues merit a brief discussion. There is <5% conversion in the absence of MeOH under catalytic conditions. With stoichiometric amounts of the NHC–Cu complex, the desired homoallylamine is obtained without the protic additive. These observations indicate that the role of the additive is in connection with the release of the NHC–Cu catalyst (i.e., **iii**→**i** in Scheme 1 with ROH = MeOH). The facile formation of various homoallylamines under conditions that include 1–5 mol % catalyst loading but 1 and 2 equiv of aldimine and MeOH, respectively, indicates that the rate of reaction of NHC–Cu-allyl complexes (cf. **ii**) with aldimines is substantially faster than adventitious protonation of the C–Cu bond of the allylmatal intermediate. Reaction with *d*₂-(pinacolato)allylboron (labeled at C3) leads to complete scrambling of deuterium at C1 and C3, suggesting the intermediacy of π -allylcopper and providing a rationale for low diastereoselectivity with the crotylboron reagents.

Modes of reaction I–II (Figure 2) may be used to account for the stereochemical outcome of the Cu-catalyzed processes. Coordination of the *N*-phosphinoylimine's Lewis basic oxygen is likely the key contact point that brings substrate and catalyst together. The less Lewis basic N may be weakly associated with the transition metal. Involvement of the Lewis basic P–O of the aldimine substrate offers a rationale for the high er values observed with *N*-phosphinoyl-derived imines versus the corresponding *o*-anisidyl-imines, which react readily under the same conditions but deliver racemic products.¹⁹ Molecular models suggest that a preference for the reaction via I versus the competing modes of reaction, such as that represented by II, might be due to subtle variations in catalyst–substrate interactions. Steric repulsion between the protruding Me unit and the aldimine substituent (G) in I appears to be less severe than that existing between a phenyl group of the phosphinoyl moiety in II (Figure 2); this difference might arise from tighter binding of the phosphinoyl oxygen with the Lewis acidic Cu, compared to the imine nitrogen. Superior enantioselectivities with **6d** (vs **6b**), particularly in the case of sterically congested aldimines, may be attributed to the tilt of the NAr moiety (Figure 1), lifting the resident *o*-Me group to accommodate the substrate molecule better. Such conformational change leads to an improvement in enantioselectivity since it may not sufficiently reduce the more severe interaction in II. It should be noted that the identity of the stereochemistry-determining step has not been determined and the energetics of the catalytic cycle might vary with different substrates. The models in Figure 2 are meant to serve primarily for the prediction of the stereochemical preferences.

■ ASSOCIATED CONTENT

S Supporting Information. Experimental procedures and spectral, analytical data for all products. This material is available free of charge via the Internet at <http://pubs.acs.org>.

■ AUTHOR INFORMATION

Corresponding Author

amir.hoveyda@bc.edu

■ ACKNOWLEDGMENT

Financial support was provided by the NIH (GM-57212). E.M. V. is an AstraZeneca graduate fellow. We thank Adil R. Zhugralin and Dr. Simon J. Meek for helpful discussions, Shalise D. Couvertier for valuable experimental assistance, and Dr. Bo Li for assistance in securing X-ray structures. Mass spectrometry facilities at Boston College are supported by the NSF (DBI-0619576).

■ REFERENCES

- (1) (a) Ding, H.; Friestad, G. K. *Synthesis* **2005**, 2815. (b) Friestad, G. K.; Mathies, A. K. *Tetrahedron* **2007**, *63*, 2541.
- (2) For general reviews that cover allyl additions to imines, see: (a) Enders, D.; Reinhold, U. *Tetrahedron: Asymmetry* **1997**, *8*, 1895. (b) Bloch, R. *Chem. Rev.* **1998**, *98*, 1407. (c) Kobayashi, S.; Ishitani, H. *Chem. Rev.* **1999**, *99*, 1069.
- (3) For examples involving enantiomerically enriched allylborons, see: (a) With *N*-trimethylsilylamine: Itsuno, S.; Watanabe, K.; Ito, K.; El-Shehawy, A. A.; Sarhan, A. A. *Angew. Chem., Int. Ed. Engl.* **1997**, *36*, 109. (b) With aldimine-trialkylborane adducts: Ramachandran, P. V.; Biswas, D. *Org. Lett.* **2007**, *9*, 3025. (c) With cyclic imines: Wu, T. R.; Ching, J. M. *J. Am. Chem. Soc.* **2006**, *128*, 9646. For transformations with enantiomerically enriched allylsilanes, see: (d) With *N*-acylhydrazones: Berger, R.; Rabbat, P. M. A.; Leighton, J. L. *J. Am. Chem. Soc.* **2003**, *125*, 9596. (e) With *o*-anisidylamines: Rabbat, P. M. A.; Corey Valdez, S.; Leighton, J. L. *Org. Lett.* **2006**, *8*, 6119. (f) With heterocyclic aldimines: Perl, N. R.; Leighton, J. L. *Org. Lett.* **2007**, *9*, 3699. (g) With *N*-heteroaryl hydrazones: Feske, M. I.; Santanilla, A. B.; Leighton, J. L. *Org. Lett.* **2010**, *12*, 688.
- (4) For example, see: (a) Cogan, D. A.; Liu, G.; Ellman, J. *Tetrahedron Lett.* **1999**, *55*, 8883. (b) Miyabe, H.; Yamaoka, Y.; Naito, T.; Takemoto, Y. *J. Org. Chem.* **2004**, *69*, 1415. (c) Vilaivan, T.; Winotapan, C.; Banphavichit, V.; Shinada, T.; Ohfune, Y. *J. Org. Chem.* **2005**, *70*, 3464. (d) Friestad, G. K.; Korapala, C. S.; Ding, H. *J. Org. Chem.* **2006**, *71*, 281. (e) Grigg, R.; McGaffrey, S.; Sridharan, V.; Fishwick, C. W. G.; Kilner, C.; Korn, S.; Bailey, K.; Blacker, J. *Tetrahedron* **2006**, *62*, 12159. (f) Sun, X.-W.; Liu, M.; Xu, M.-H.; Lin, G.-Q. *Org. Lett.* **2008**, *10*, 1259. (g) Reddy, L. R.; Hu, B.; Prashad, M.; Prasad, K. *Org. Lett.* **2008**, *10*, 3109. (h) Delaye, P.-O.; Pradhan, T. K.; Lambert, E.; Vasse, J.-L.; Szymoniak, J. *Eur. J. Org. Chem.* **2010**, 3395.
- (5) For Cu-catalyzed allyl additions to α -amino esters, see: (a) With allylstannanes: Fang, X.; Johansen, M.; Yao, S.; Gathergood, N.; Hazell, R. G.; Jørgensen, K. A. *J. Org. Chem.* **1999**, *64*, 4844. (b) With alkenes: Ferraris, D.; Young, B.; Cox, C.; Dudding, T.; Drury, W. J., III; Ryzhkov, L.; Taggi, A. E.; Lectka, T. *J. Am. Chem. Soc.* **2002**, *124*, 67. (c) With allylsilanes: Kiyohara, H.; Nakamura, Y.; Matsubara, R.; Kobayashi, S. *Angew. Chem., Int. Ed.* **2006**, *45*, 1615.
- (6) For catalytic enantioselective allyl additions to aldimines with stoichiometric amounts of In-based reagents, see: (a) Kargbo, R.; Takahashi, Y.; Bhor, S.; Cook, G. R.; Lloyd-Jones, G. C.; Shepperson, I. R. *J. Am. Chem. Soc.* **2007**, *129*, 3846. (b) Tan, K. L.; Jacobsen, E. N. *Angew. Chem., Int. Ed.* **2007**, *46*, 1315. (c) Kim, S. J.; Jang, D. O. *J. Am. Chem. Soc.* **2010**, *132*, 12168. For a related In-catalyzed process involving allylboronates and *N*-acylhydrazones, see: (d) Chakrabarti, A.; Konishi, H.; Yamaguchi, M.; Schneider, U.; Kobayashi, S. *Angew. Chem., Int. Ed.* **2010**, *49*, 1838.
- (7) For Zn-catalyzed enantioselective reactions of allylborons with *N*-acyl α -amino esters, see: (a) Fujita, M.; Nagano, T.; Schneider, U.; Hamada, T.; Ogawa, C.; Kobayashi, S. *J. Am. Chem. Soc.* **2008**, *130*, 2914. For diol-catalyzed reactions of allylborons with *N*-acyl imines, see: (b) Lou, S.; Moquist, P. N.; Schaus, S. E. *J. Am. Chem. Soc.* **2007**, *129*, 15398.
- (8) For enantioselective allyl additions to *N*-aryl aldimines, see: (a) From aryl-substituted aldehydes: Gastner, T.; Ishitani, H.; Akiyama, R.; Kobayashi, S. *Ang. Chem., Int. Ed.* **2001**, *40*, 1896. (b) From Ph-substituted aldehydes: Naodovic, M.; Wadamoto, M.; Yamamoto, H. *Eur. J. Org. Chem.* **2009**, 5129. For reactions of allylstannanes with *N*-benzyl aldimines (aryl-substituted) and Pd-based catalysts, see: (c) Fernandes, R. A.; Stimac, A.; Yamamoto, Y. *J. Am. Chem. Soc.* **2003**, *125*, 14133. (d) Fernandes, R. A.; Yamamoto, Y. *J. Org. Chem.* **2004**, *69*, 735.
- (9) For use of C_1 -symmetric NHC-Cu complexes in enantioselective synthesis of C-C, C-Si, and C-B bonds, respectively, see: (a) Lee, K.-s.; Hoveyda, A. H. *J. Org. Chem.* **2009**, *74*, 4455. (b) Lee, K.-s.; Hoveyda, A. H. *J. Am. Chem. Soc.* **2010**, *132*, 2898. (c) O'Brien, J. M.; Lee, K.-s.; Hoveyda, A. H. *J. Am. Chem. Soc.* **2010**, *132*, 10630.
- (10) (a) Du, Y.; Xu, L.-W.; Shimizu, Y.; Oisaki, K.; Kanai, M.; Shibasaki, M. *J. Am. Chem. Soc.* **2008**, *130*, 16146. (b) Burgos, P. O.; Fernández, I.; Iglesias, M. J.; García-Granda, S.; Ortiz, F. L. *Org. Lett.* **2008**, *10*, 537.
- (11) (a) Lee, Y.; Hoveyda, A. H. *J. Am. Chem. Soc.* **2009**, *131*, 3160. (b) Guzman-Martinez, A.; Hoveyda, A. H. *J. Am. Chem. Soc.* **2010**, *132*, 10634.
- (12) For a previous report where an achiral NHC-Cu-allyl is generated from an allylsilane and an NHC-Cu-F and the subsequent additions to aldehydes, see: (a) Russo, V.; Herron, J. R.; Ball, Z. T. *Org. Lett.* **2010**, *12*, 220. For an example of a chiral Cu-allyl complex, generated from a CuF or CuOAc complex, respectively, in the presence of **1**, see: (b) Wada, R.; Shibuguchi, T.; Makino, S.; Oisaki, K.; Kanai, M.; Shibasaki, M. *J. Am. Chem. Soc.* **2006**, *128*, 7687. (c) Shi, S.-L.; Xu, L.-W.; Oisaki, K.; Kanai, M.; Shibasaki, M. *J. Am. Chem. Soc.* **2010**, *132*, 6638.
- (13) Lee, K.-s.; Zhugralin, A. R.; Hoveyda, A. H. *J. Am. Chem. Soc.* **2009**, *131*, 7253.
- (14) Mun, S.; Lee, J.-E.; Yun, J. *Org. Lett.* **2006**, *8*, 4887.
- (15) Steric repulsion between the protruding Ph group of the imidazolium backbone and the *o*-isopropyl substituent causes tilting of the *N*-aryl ($C_{\text{carbene}}-N-C-C_{i-Pr}$ dihedral angle = 74.2° , $C_{\text{carbene}}-N-C-C_{\text{Me}}$ dihedral angle = -103.4°) such that the other *ortho* unit of the *N*-Ar group (Me) and the backbone of the *N*-heterocyclic carbene (H_a in major **6d** isomer, Figure 1) are brought into a high degree of propinquity. It thus appears that the alternative orientation, where the Me is *syn* to the Ph group and the larger *i-Pr* is oriented towards the rear, leads to a higher energy conformer. See: Lee, Y.; Li, B.; Hoveyda, A. H. *J. Am. Chem. Soc.* **2009**, *131*, 11625.
- (16) The identity of the alternative minor isomer (*o*-Me *syn* to NHC Ph) has been independently established by nOe experiments. The two isomers of **6d** readily interconvert in solution at ambient temperature. When a crystal of the major rotamer of the chiral imidazolium salt (used to obtain the X-ray structure) is placed in solution ($CDCl_3$, $22^\circ C$), the original 5:1 ratio is observed within a few minutes.
- (17) Alkyl-substituted aldimines are prepared in situ through the corresponding α -amino sulfones, see: Yamaguchi, A.; Matsunaga, S.; Shibasaki, M. *Tetrahedron Lett.* **2006**, *47*, 3985.
- (18) For Pd-catalyzed enantioselective 2-carboxyl ester-substituted homoallyl amine synthesis from *N*-benzyl aldimines and allylbromides or allylstannanes, see: (a) Fernandes, R. A.; Yamamoto, Y. *J. Org. Chem.* **2004**, *69*, 3562. For Pd-catalyzed diastereoselective additions of 2-substituted allylindiums to enantiomerically pure aldimines, see: (b) Yanada, R.; Kaieda, A.; Takemoto, Y. *J. Org. Chem.* **2001**, *66*, 7516. (c) Cooper, I. R.; Grigg, R.; MacLachlan, W. S.; Thornton-Pett, M.; Sridharan, V. *Chem. Commun.* **2002**, 1372. (d) Medjahdi, M.; González-Gómez, J. C.; Foubelo, F.; Yus, M. *Heterocycles* **2008**, *76*, 569. For related processes with allylzincs, see: (e) van der Sluis, M.; Dalmolen, J.; de Lange, B.; Kaptein, B.; Kellogg, R. M.; Broxterman, Q. B. *Org. Lett.* **2001**, *3*, 3943.
- (19) See the Supporting Information for details.